

# Resource Pool Scheduler 1.2

By Ricky El-Qasem

## Contents

Introduction .....	3
Architecture .....	3
System Requirements .....	3
Installation .....	3
Getting Started.....	5
Configuration Settings .....	7
Roadmap .....	7
License.....	7

## Introduction

Resource Pool Scheduler 1.2 is an application that runs a service used to periodically change the settings of a vSphere Resource Pool for example:

You may require to divert the CPU share allocation of a resource pool to a resource pool which is used for backup servers at 7pm and then revert the CPU share allocation back to how it was at 7am. This is useful to give the backup servers priority between the hours of 7pm and 7am.

## Architecture

Resource Pool Scheduler is made up of 2 components:

- A Policy Manager, used to create policies which define what time to make changes to pools and what settings to change.
- A Resource Pool Service which runs transparently to execute the policies.

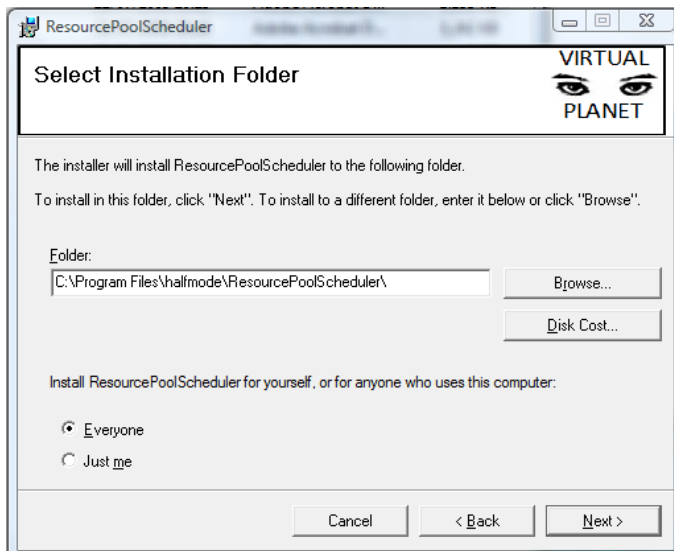
## System Requirements

Resource Pool Scheduler requires a windows 32bit operating system on the same network as you vSphere installation. Resource Pool Scheduler also requires .Net framework 2.x or later.

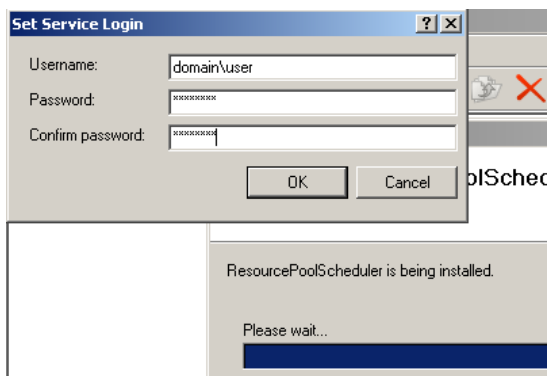
***Note: Resource Pool Scheduler 1.2 has not been tested on x64 as of writing this document.***

## Installation

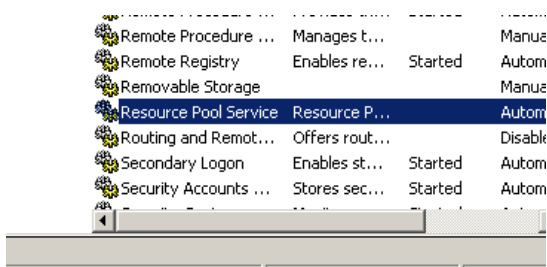
To install Resource Pool Scheduler run the setup.exe file.



Just before completion you will be prompted for service logon details, you must specify a user account that rights to run as a local services:

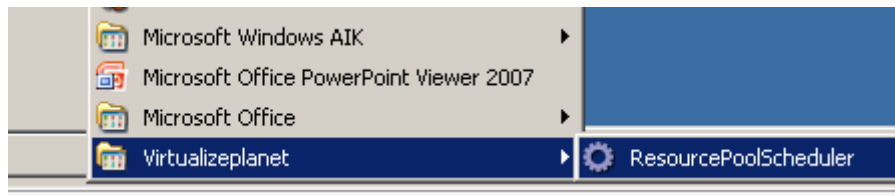


You may also have to start the service manual or automatically by rebooting the computer:

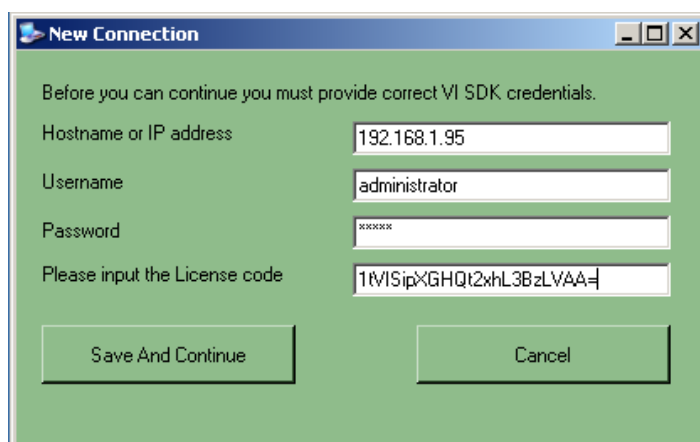


## Getting Started

Open Resource Pool Scheduler:

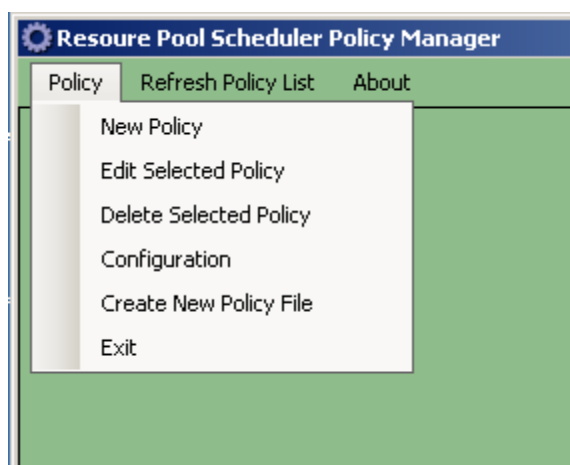


First thing you have to do is define the connection settings and input a valid license code.



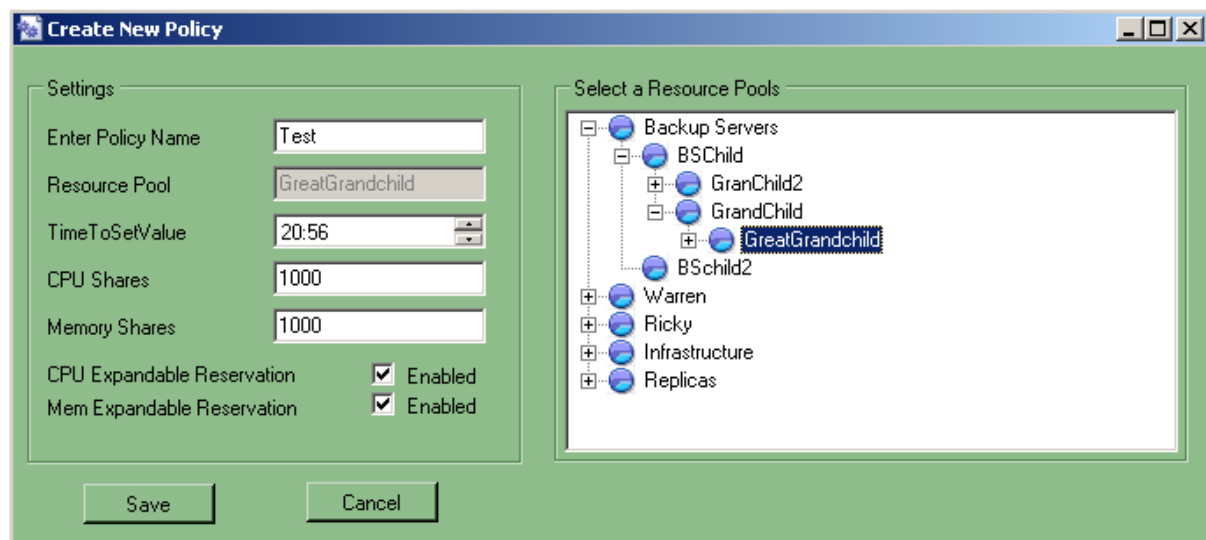
Now you are ready to create policies.

Click on Policy on the menu bar and select New Policy:

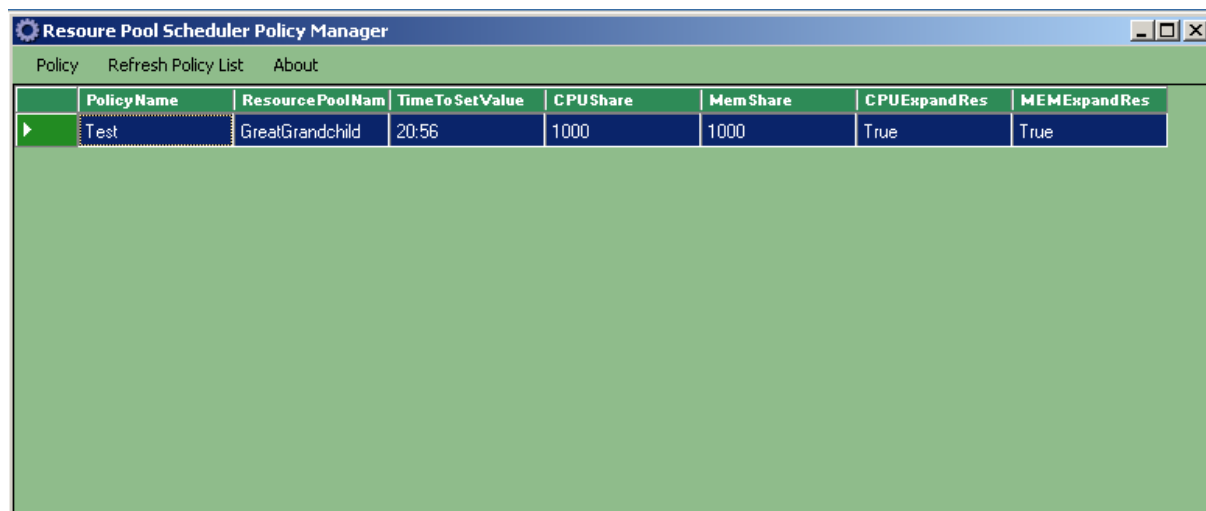


In the New Policy dialog box specify the follow:

- A Policy Name – use something relevant
- A Resource pool – this is the pool used for scheduled change
- A time to make the change – try not to create more than one policy to run in the same minute
- CPU share setting – in version 1.0 you can only use a numeric share allocation
- Memory share settings - in version 1.0 you can only use a numeric share allocation
- CPU Expandable Reservation – Enable or Disable
- Memory Expandable Reservation – Enable or Disable



All policies will be displayed on the Policy Manager window:



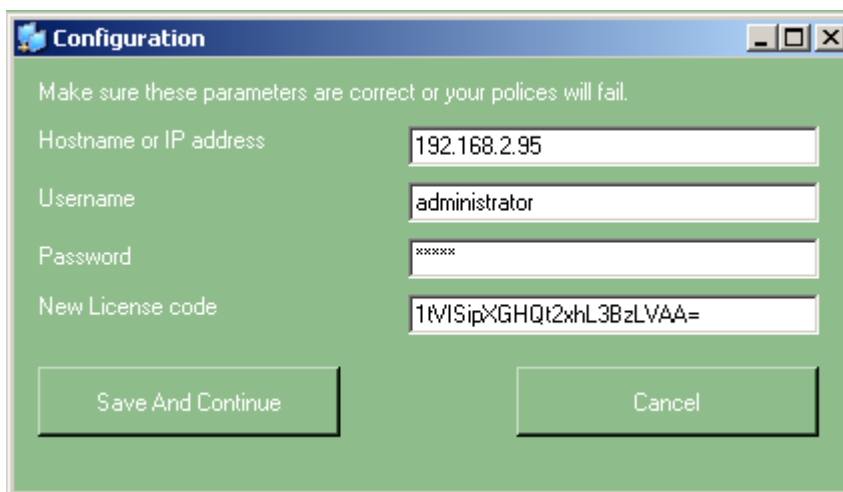
From here you can:

- Create new policies as above
- Edit Existing policies
- Delete policies

## Configuration Settings

It's very important that you have the correct connection settings to your vSphere environment. Failure to do so will result in Resource Pool Scheduler failing.

You can at any time change the connection settings by selecting Policy>Connection Settings :



The screenshot shows a 'Configuration' dialog box with a green background. It contains four text input fields and two buttons. The fields are labeled 'Hostname or IP address', 'Username', 'Password', and 'New License code'. The values entered are '192.168.2.95', 'administrator', 'xxxxx', and '1tVlSipXGHQt2xhL3BzLVAA=' respectively. The buttons are 'Save And Continue' and 'Cancel'.

Field	Value
Hostname or IP address	192.168.2.95
Username	administrator
Password	xxxxx
New License code	1tVlSipXGHQt2xhL3BzLVAA=

## Roadmap

Plans are made to add features which include:

- More of the resource pool settings maybe included for example: CPU Limit setting

## License

Currently RPS is free to use. This may change in later versions. A license key is used only to track current usage of the tool.